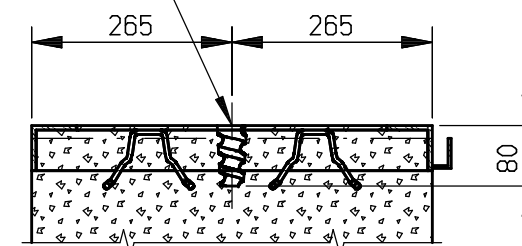
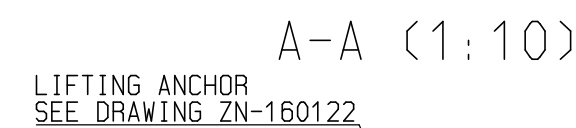
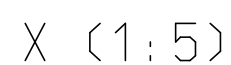
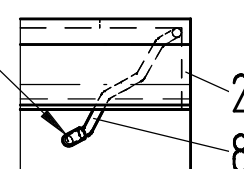
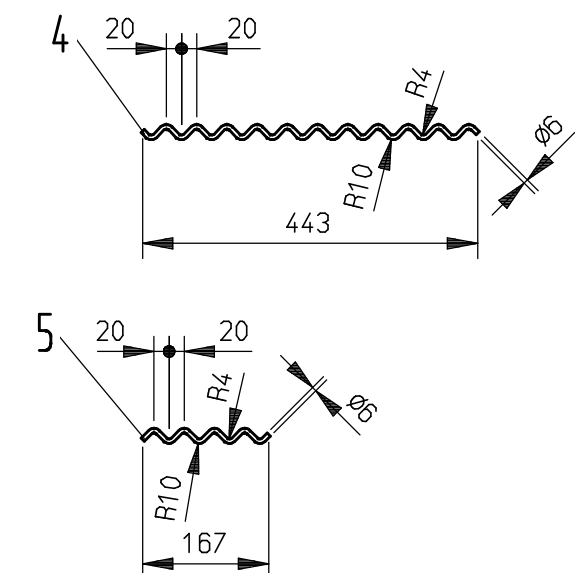
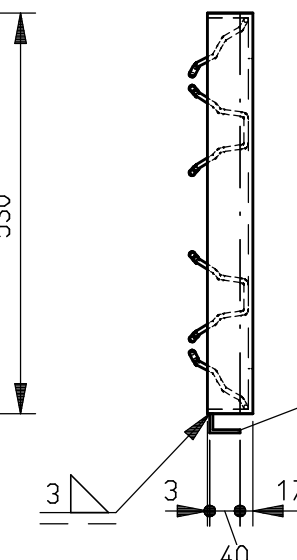
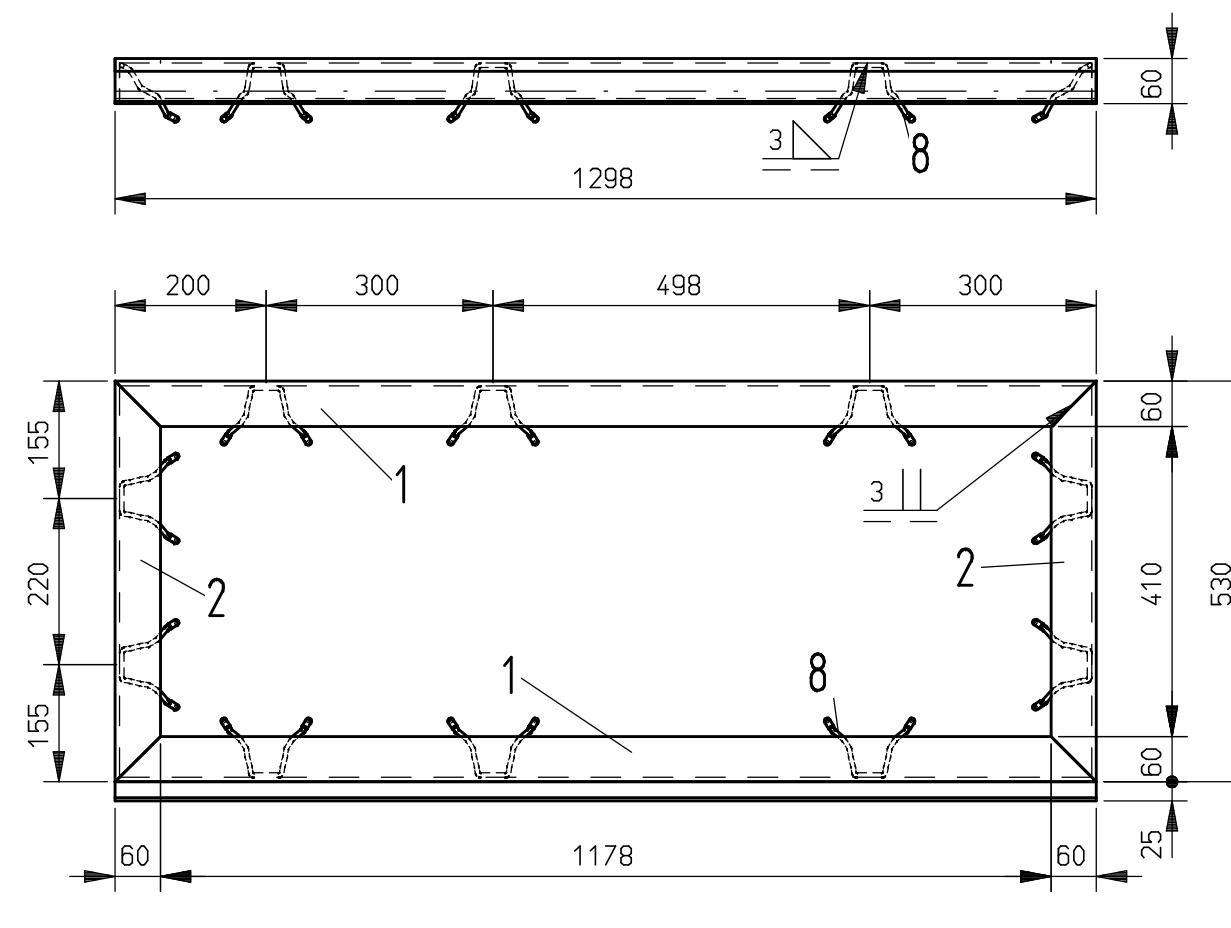


PUT PLASTIC CAPS
ON ANCHOR ENDS



STEEL FRAME



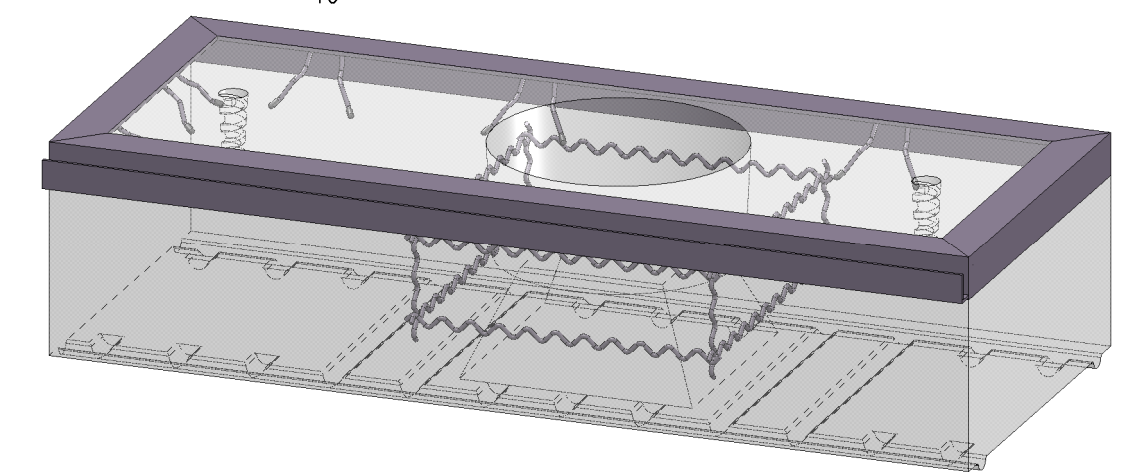
Weld preparation according to DIN EN ISO 9692-1.

Quality class of the weld according to DIN EN ISO 5817-D.

General tolerances of the welded assembly according to EN ISO 13920-B/F.

100% visual testing of the welds.

Execution of welding according to the manufacturer's current WPS in accordance with DIN EN ISO 15607-C or valid Riedhammer WPS.



CARBON STEEL (ST) (Ident.050259):	22,17kg
HEAT RESIST. STEEL 1.4841 (AISI 310(314)) (Ident.050255):	1,18kg

[illegible]

REFERENCE DRAWINGS

DRAWING NO.	TITLE
ZN-241521	TOP BLOCK ARRANGEMENT
T_1001	REFRACTORY MATERIAL SPECIFICATION
T_1002	REFRACTORY ASSEMBLY SPECIFICATION

NOTES

- ALL DIMENSIONS IN mm UNLESS OTHERWISE INDICATED
- TOP SURFACE OF TOP BLOCKS TO BE ROUGH-TEXTURED TO PREVENT SLIPPAGE
- FINAL QUANTITY OF LIFTING ANCHORS SEE BoM_1003 - TOP BLOCKS
- ALL PITGAIL ANCHORS THAT ARE IN CONTACT WITH CONCRETE HAVE TO BE COATED WITH SYNERLOGIC PLASTICOAT®. MAXIMUM LAYER THICKNESS IS 1 mm.

2D = spare part 1 = provided to J = job site S = supplier															
	b				Issued for construction				Daeumler				05.12.2024		
	Änderung nur über CAD/modification only via CAD														
	Ind./nd.												Name/name		Datum/date
Wenn nicht anders angegeben, ist die Arbeits- vorbereitung und Durchführung der Schweiß- prozesse vom Lieferanten zu bestimmen. Unless otherwise stated, the work preparation and execution of the welding must be determined by the supplier.			Datum/date		Name/name		Werkstoff/material								
	Erstellt / created		25.06.2024		Ringer										
	1D-Freig. / 1D-release		05.12.2024		Daeumler										
	Ftg.Freig. / prod.release		05.12.2024		Daeumler										
	Maßstab Scale		Benennung/designation						Zchnng.Nr./dwg-no. ZN-235638						
	1:10		Topblock – Heizwand A2						Teile-Nr./part-no. TN-159922		index b		A2		
									Bemerkung/remark						
									Ursprung/origin				Blatt/page		